



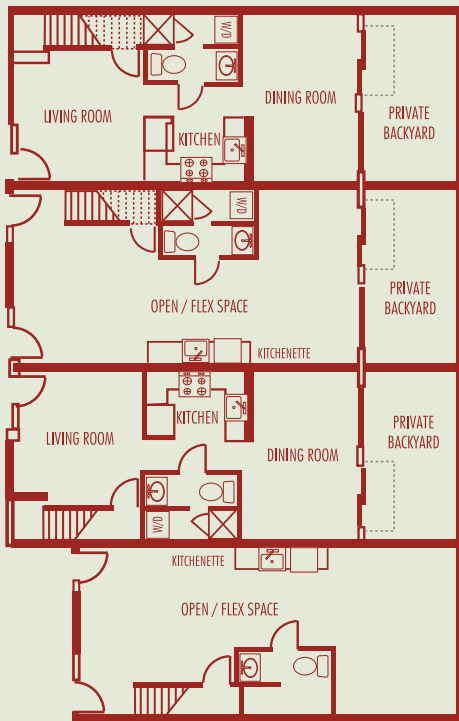
Metro Lofts

2831 - 2841 Seventh Street
Berkeley, CA 94710

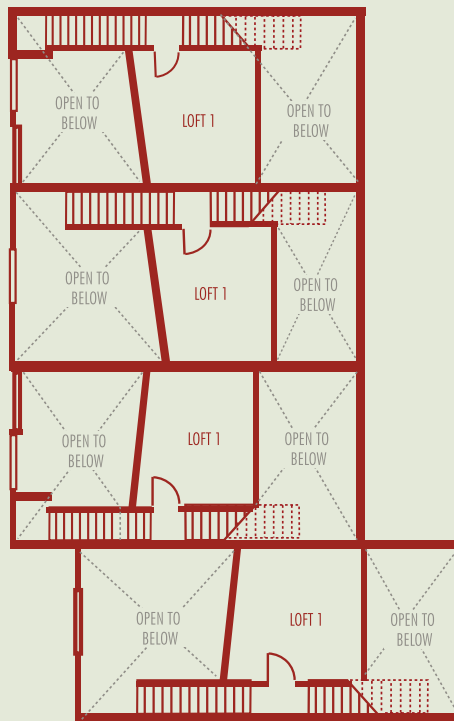


Berkeley-Lofts.com

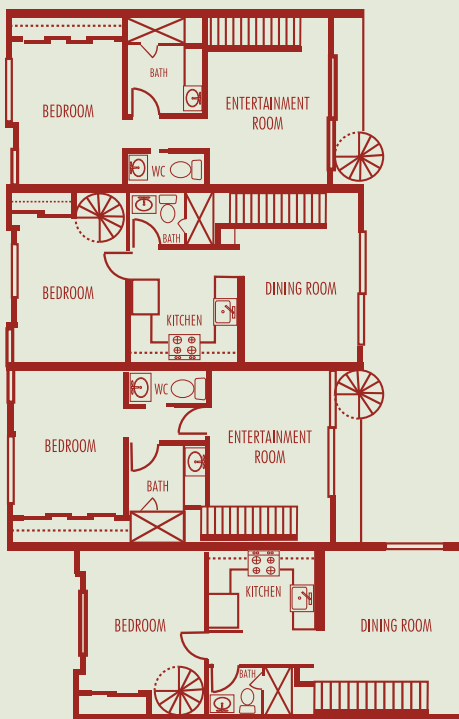
RESIDENTIAL FLOOR PLANS



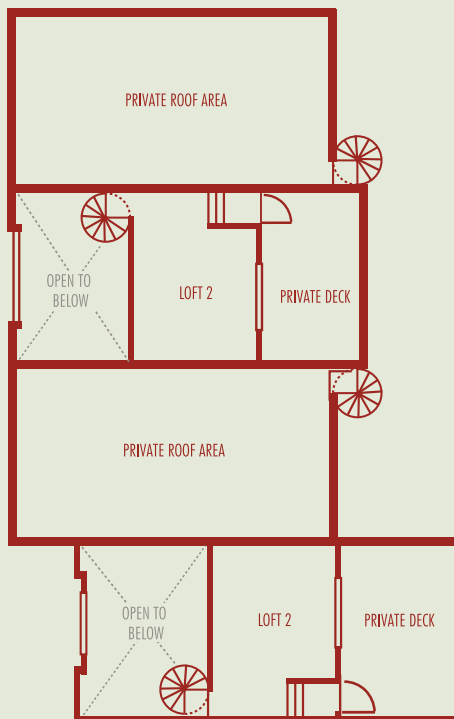
GROUND FLOOR



LOFT AREA #1



SECOND FLOOR



LOFT AREA #2 :: DECK :: ROOF

2841 7TH STREET:

1,635 square feet

Three-story Unit, 1BR / 2BA + Two Loft Areas (400 sq. ft.)

- Ground Floor : Large Open/Flex Space (over 600 sq. ft.), Kitchenette, Bathroom/Walk-In Shower, Washer/Dryer
- Loft Area #1 : 235 sq. ft.
- Second Floor : Bedroom, Kitchen, Dining Area, Large Bathroom/Water Closet, and Spiral Stairs providing access to Loft Area #2
- Loft Area #2 : 230 sq. ft., Private Outdoor Deck Area

2839 7TH STREET:

1,320 square feet

Three-story Unit, 1BR / 2BA + Loft Area

- Ground Floor : Living Room, Kitchen, Bathroom, Washer/Dryer, Dining Area
- Loft Area #1 : 160 sq. ft.
- Second Floor : Bedroom, Large Bathroom/Walk-In Shower, Water Closet, Entertainment Room, Spiral Stairs Providing Access to Deck and Private Roof Area
- Private Backyard Area (170 sq. ft.)

2837 7TH STREET:

1,730 square feet

Three-story Unit, 1BR / 2BA + Two Loft Areas (400 sq. ft.)

- Ground Floor : Large Open/Flex Space (over 600 sq. ft.), Kitchenette, Bathroom/Walk-In Shower, Washer/Dryer
- Loft Area #1 : 235 sq. ft.
- Second Floor : Bedroom, Kitchen, Dining Area, Large Bathroom/Water Closet, and Spiral Stairs providing access to Loft Area #2
- Loft Area #2 : 230 sq. ft., Private Outdoor Deck Area